

Ashtons



13 Pinelands Way Osbaldwick YO10 3QJ

£1,100 PCM

2



1



1

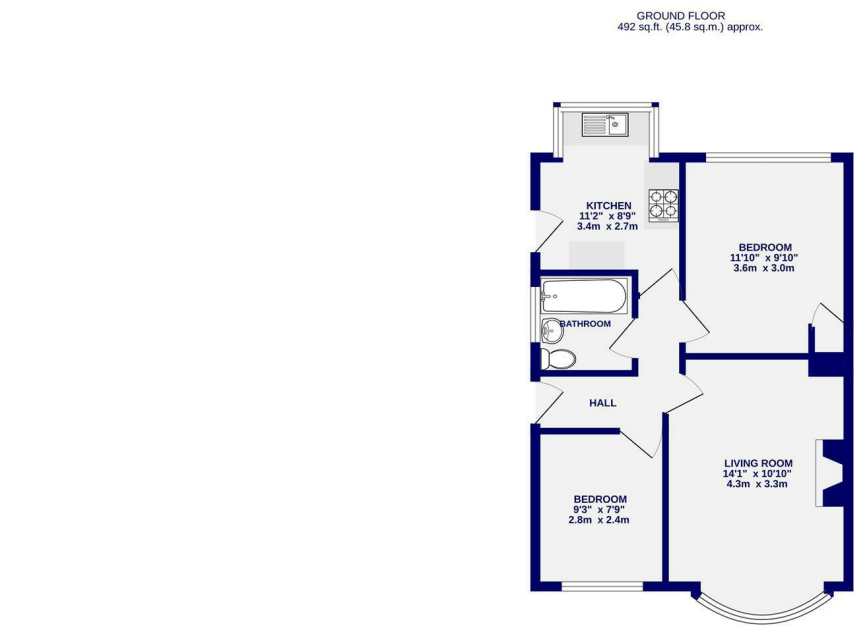


D



A two bedroom semi-detached bungalow situated in Osbaldwick, just off Hull Road, with good access to the A1079 and A64 as well as transport links to the city centre. The property is offered for let on an unfurnished basis and briefly comprises entrance hall; kitchen with oven, hob, washing machine and fridge freezer; bright and airy lounge with bay window; double bedroom; single bedroom. Externally the property benefits from a front and rear garden, driveway parking and a single garage.

Available Now / 6+ Month Tenancy / Deposit £1200 / Council Tax Band B / EPC Rating D



TOTAL FLOOR AREA: 492 sq.ft. (45.8 sq.m.) approx.
Whilst every attempt has been made to ensure the accuracy of the floorplan, measurements of rooms and any other areas are approximate. It is advised to the plan the dimensions and floor area of the overall floor area and is not intended to be used as a guide for any prospective purchaser. The various systems and appliances shown have not been tested and are guaranteed as to their operation.
Made with Mapbox (2020)

